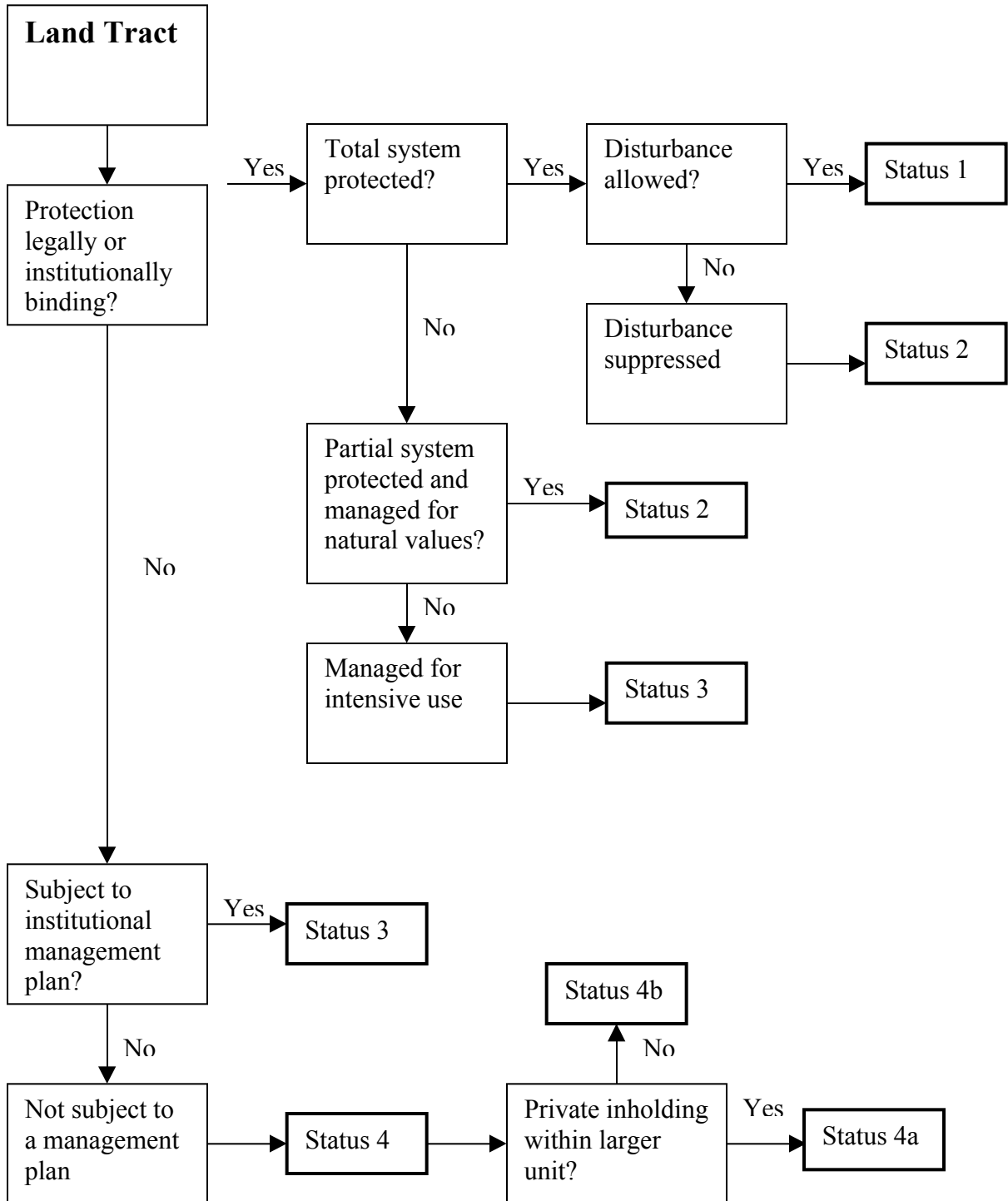


Appendix 4-1. Flow chart (originally developed for NM-GAP) used as an aid in determining land management status categories. See Crist et al. 1994. Status 4a and 4b were added by WV-GAP to track inholdings within National Forest and National Wildlife Refuge proclamation boundaries.



Appendix 4-2. Land administrative units mapped by WV-GAP (status 1 and 2 only), listed by managing agency, status, mapped area, year established, and reference or contact information for management plan.

Steward(s)/Name	Status	Mapped Area (ha)	Year	Reference/Contact Information
The Nature Conservancy				
Altona Marsh	1	0.98	-	TNC West Virginia Field Office, Charleston, WV 25301
Black Creek Shale Barren	1	0.69	-	TNC West Virginia Field Office, Charleston, WV 25301
Brooklyn Heights Preserve	1	42.83	-	TNC West Virginia Field Office, Charleston, WV 25301
Brush Creek	1	54.73	1984	TNC 1984. A guide to West Virginia preserves. The Nature Conservancy, Arlington, VA.
Cranesville Swamp	1	184.11	1963	TNC 1984. A guide to West Virginia preserves. The Nature Conservancy, Arlington, VA.
Cranesville Swamp	1	13.61	1963	TNC 1984. A guide to West Virginia preserves. The Nature Conservancy, Arlington, VA.
Droop Mountain Bog	1	1.86	-	TNC West Virginia Field Office, Charleston, WV 25301
General Davis Cave	1	0.61	1982	TNC 1984. A guide to West Virginia preserves. The Nature Conservancy, Arlington, VA.
Greenland Gap	1	78.11	1964	TNC 1984. A guide to West Virginia preserves. The Nature Conservancy, Arlington, VA.
Hidden Valley- Black Pond	1	316.94	1984	TNC 1984. A guide to West Virginia preserves. The Nature Conservancy, Arlington, VA.
Hungry Beech Preserve	1	47.67	ca. 1978	TNC 1984. A guide to West Virginia preserves. The Nature Conservancy, Arlington, VA.
Ice Mountain Preserve	1	60.54	-	TNC West Virginia Field Office, Charleston, WV 25301
Morgan Woods Nature Preserve	1	26.20	-	TNC West Virginia Field Office, Charleston, WV 25301
Murphy Preserve	1	725.16	1967	TNC 1984. A guide to West Virginia preserves. The Nature Conservancy, Arlington, VA.
Nelson Property	1	214.05	-	TNC West Virginia Field Office, Charleston, WV 25301
Panther Knob	1	218.10	1984	TNC 1984. A guide to West Virginia preserves. The Nature Conservancy, Arlington, VA.
Percys Cave	1	1.01	-	TNC West Virginia Field Office, Charleston, WV 25301
Piddling Pit Cave	1	1.26	-	TNC West Virginia Field Office, Charleston, WV 25301
Pike Knob	1	788.66	-	TNC West Virginia Field Office, Charleston, WV 25301
Rock Dome	1	2.98	-	TNC West Virginia Field Office, Charleston, WV 25301
Slaty Mountain Shale Barren	1	43.72	-	TNC West Virginia Field Office, Charleston, WV 25301
Stony Run Shale Barren	1	3.71	-	TNC West Virginia Field Office, Charleston, WV 25301

Appendix 4-2 continued.

Steward(s)/Name	Status	Mapped Area (ha)	Year	Reference/Contact Information
Wardensville Shale Barren	1	2.47	-	TNC West Virginia Field Office, Charleston, WV 25301
Yankaur Preserve	1	47.55	1967	TNC 1984. A guide to West Virginia preserves. The Nature Conservancy, Arlington, VA.
US Forest Service				
Cranberry Wilderness	1	14,702.30	-	USFS 1986. Land and resource management plan, Monongahela National Forest. USDA Forest Service Eastern Region, Elkins, WV.
Dolly Sods Wilderness	1	6,924.88	-	USFS 1986. Land and resource management plan, Monongahela National Forest. USDA Forest Service Eastern Region, Elkins, WV.
Laurel Fork North Wilderness	1	2,453.95	-	USFS 1986. Land and resource management plan, Monongahela National Forest. USDA Forest Service Eastern Region, Elkins, WV.
Laurel Fork South Wilderness	1	2,421.95	-	USFS 1986. Land and resource management plan, Monongahela National Forest. USDA Forest Service Eastern Region, Elkins, WV.
Mountain Lake Wilderness	1	1,087.86	-	USFS 1985. Land and resource management plan, Jefferson National Forest. USDA Forest Service Southern Region, Roanoke, VA.
Otter Creek Wilderness	1	8,092.57	-	USFS 1986. Land and resource management plan, Monongahela National Forest. USDA Forest Service Eastern Region, Elkins, WV.
National Park Service				
Bluestone NSR	2	37.75	1988	Bluestone NSR, Glen Jean, WV 25846
Bluestone NSR	2	29.97	1988	Bluestone NSR, Glen Jean, WV 25846
Bluestone NSR	2	166.82	1988	Bluestone NSR, Glen Jean, WV 25846
Bluestone NSR	2	477.04	1988	Bluestone NSR, Glen Jean, WV 25846
Bluestone NSR	2	155.96	1988	Bluestone NSR, Glen Jean, WV 25846
Bluestone NSR	2	551.06	1988	Bluestone NSR, Glen Jean, WV 25846
Gauley River NRA	2	4,100.40	1988	Gauley River NRA, PO Box 246, Glen Jean, WV 25846
New River Gorge National River	2	22,441.31	1978	New River Gorge NR, PO Box 246, Glen Jean, WV 25846

Appendix 4-2 continued.

Steward(s)/Name	Status	Mapped Area (ha)	Year	Reference/Contact Information
US Fish and Wildlife Service				
Broadback Island	2	15.98	-	Ohio River Islands NWR, PO Box 1811, Parkersburg, WV 26102
Buffington Island	2	62.69	-	Ohio River Islands NWR, PO Box 1811, Parkersburg, WV 26102
Canaan Valley NWR	2	267.39	1993	Canaan Valley NWR, HC70 Box 189, Davis WV 26260
Cluster Island	2	5.55	-	Ohio River Islands NWR, PO Box 1811, Parkersburg, WV 26102
Crab Island	2	0.84	-	Ohio River Islands NWR, PO Box 1811, Parkersburg, WV 26102
Grandview Island	2	5.68	-	Ohio River Islands NWR, PO Box 1811, Parkersburg, WV 26102
Grape Island	2	18.75	-	Ohio River Islands NWR, PO Box 1811, Parkersburg, WV 26102
Letart Island	2	10.45	-	Ohio River Islands NWR, PO Box 1811, Parkersburg, WV 26102
Middle Island	2	102.87	-	Ohio River Islands NWR, PO Box 1811, Parkersburg, WV 26102
Mill Creek Island	2	9.54	-	Ohio River Islands NWR, PO Box 1811, Parkersburg, WV 26102
Muskingum Island	2	46.99	-	Ohio River Islands NWR, PO Box 1811, Parkersburg, WV 26102
Neal Island	2	55.68	-	Ohio River Islands NWR, PO Box 1811, Parkersburg, WV 26102
Paden Island	2	35.12	-	Ohio River Islands NWR, PO Box 1811, Parkersburg, WV 26102
Wells Island	2	18.62	-	Ohio River Islands NWR, PO Box 1811, Parkersburg, WV 26102
Wheeling Island	2	148.81	-	Ohio River Islands NWR, PO Box 1811, Parkersburg, WV 26102
Williamson Island	2	56.77	-	Ohio River Islands NWR, PO Box 1811, Parkersburg, WV 26102
Witten Towhead	2	1.72	-	Ohio River Islands NWR, PO Box 1811, Parkersburg, WV 26102
WV Division of Natural Resources				
Audra State Park	2	128.02	-	WV Legislature, Joint Committee on Government and Finance, Subcommittee on Park System. 1975. State Park System: Final report. Charleston, WV.
Babcock State Park	2	1,574.17	-	_____, 1975. State Park System: Final report. Charleston, WV.
Beartown State Park	2	87.67	-	_____, 1975. State Park System: Final report. Charleston, WV.
Beech Fork Lake State Park	2	1,214.43	-	_____, 1975. State Park System: Final report. Charleston, WV.
Blackwater Falls State Park	2	634.66	-	_____, 1975. State Park System: Final report. Charleston, WV.

Appendix 4-2 continued.

Steward(s)/Name	Status	Mapped Area (ha)	Year	Reference/Contact Information
Blennerhassett Island Hist. St.Pk.	2	205.56	-	_____, 1975. State Park System: Final report. Charleston, WV.
Bluestone State Park	2	278.09	-	_____, 1975. State Park System: Final report. Charleston, WV.
Cacapon State Park	2	2,590.41	-	_____, 1975. State Park System: Final report. Charleston, WV.
Camp Creek State Park	2	267.97	-	_____, 1975. State Park System: Final report. Charleston, WV.
Canaan Valley State Park	2	2,455.84	-	_____, 1975. State Park System: Final report. Charleston, WV.
Cass Scenic RR State Park	2	42.99	-	_____, 1975. State Park System: Final report. Charleston, WV.
Cathedral State Park	2	60.60	-	_____, 1975. State Park System: Final report. Charleston, WV.
Cedar Creek State Park	2	960.72	-	_____, 1975. State Park System: Final report. Charleston, WV.
Cedar Lake State Camp	2	132.47	-	_____, 1975. State Park System: Final report. Charleston, WV.
Chief Logan State Park	2	1,255.94	-	_____, 1975. State Park System: Final report. Charleston, WV.
Droop Mountain State Park	2	128.69	-	_____, 1975. State Park System: Final report. Charleston, WV.
Fairfax Stone State Park	2	0.31	-	_____, 1975. State Park System: Final report. Charleston, WV.
Grave Creek Mound State Park	2	0.87	-	_____, 1975. State Park System: Final report. Charleston, WV.
Hawks Nest State Park	2	189.22	-	_____, 1975. State Park System: Final report. Charleston, WV.
Holly River State Park	2	3,235.88	-	_____, 1975. State Park System: Final report. Charleston, WV.
Little Beaver State Park	2	221.63	-	_____, 1975. State Park System: Final report. Charleston, WV.
Lost River State Park	2	1,596.03	-	_____, 1975. State Park System: Final report. Charleston, WV.
North Bend State Park	2	525.04	-	_____, 1975. State Park System: Final report. Charleston, WV.
Pinnacle Rock State Park	2	86.28	-	_____, 1975. State Park System: Final report. Charleston, WV.
Pipestem State Park	2	1,211.35	-	_____, 1975. State Park System: Final report. Charleston, WV.
Point Pleasant State Park	2	1.16	-	_____, 1975. State Park System: Final report. Charleston, WV.
Pricketts Fort State Park	2	8.88	-	_____, 1975. State Park System: Final report. Charleston, WV.
Stonewall Jackson Lake State Park	2	1,152.10	-	_____, 1975. State Park System: Final report. Charleston, WV.
Tomlinson Run State Park	2	532.75	-	_____, 1975. State Park System: Final report. Charleston, WV.
Twin Falls State Park	2	1,520.27	-	_____, 1975. State Park System: Final report. Charleston, WV.
Tygart Lake State Park	2	391.37	-	_____, 1975. State Park System: Final report. Charleston, WV.

Appendix 4-2 continued.

Steward(s)/Name	Status	Mapped Area (ha)	Year	Reference/Contact Information
Valley Falls State Park	2	449.13	-	_____, 1975. State Park System: Final report. Charleston, WV.
Watoga State Park	2	4,337.33	-	_____, 1975. State Park System: Final report. Charleston, WV.
Watters Smith Memorial State Park	2	222.69	-	_____, 1975. State Park System: Final report. Charleston, WV.